

Model No.: 1307 Door Closer

Full Cover Multi-size Full Feature Closer
ANSI 156.4 Grade 1

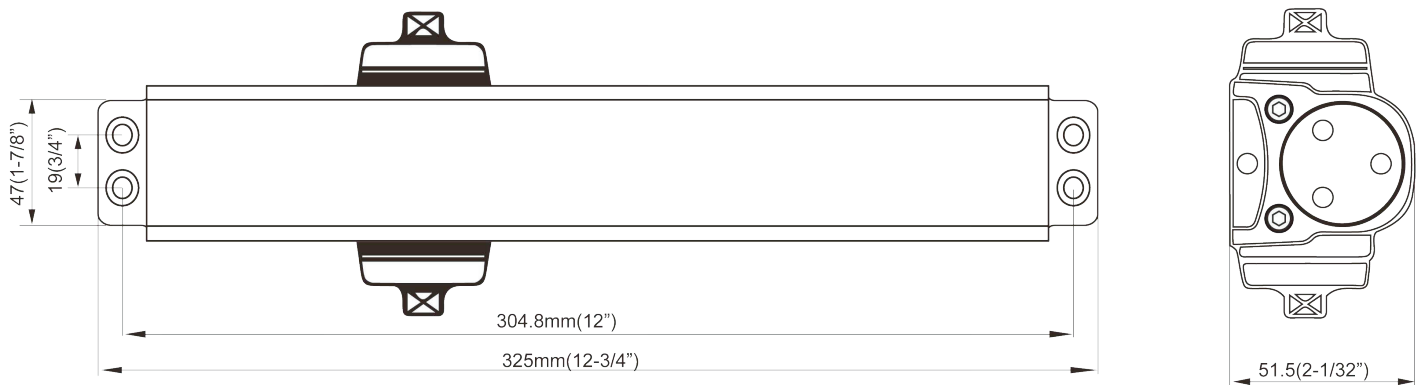
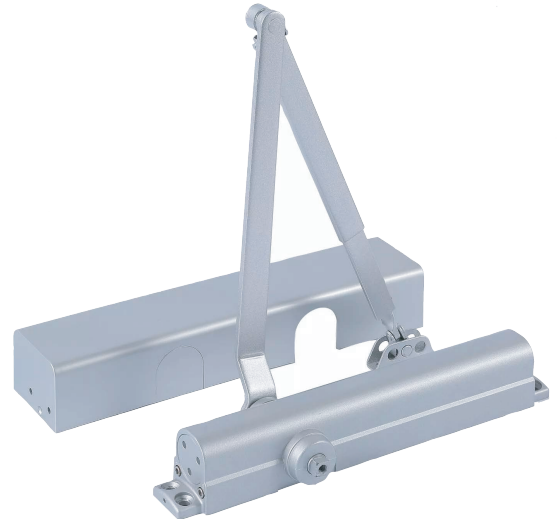
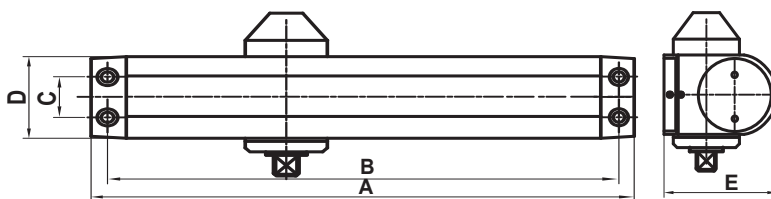


UL Listed Conforms to standards
UL10C

Specifications:

Description Size

- A. Length of Closer Body **325 mm (12-3/4")**
- B. Horizontal Mounting Holes **304.8 mm (12")**
- C. Vertical Mounting Holes **19 mm (3/4")**
- D. Width of Closer Body **47 mm (1-7/8")**
- E. Projection from Door **51.5 mm (2-1/32")**

**Features:**

- Universal application. Non-handed for standard, top-jamb or parallel arm installation
- Non-sized, multi size 1 to 6
- Standard adjustable back-check function
- Adjustable closing and latching speed by two separate regulating valves
- Standard full plastic cover
- Extended long arm for top jamb mount with deep reveals. 1307 EXT
- ANSI 156.4 Grade 1: UL listed for fire door assemblies
- Available in Alum, Duro, Black, Gold Finishes
- Optional adjustable delayed action (DA) Preset at the factory for approximately 20 seconds, between 70° and 0° Delay time easily adjusted up to 1 minute.
- Barrier free (BR) Meets ADA regulation. Size 1 thru 4. Engineered with reduced spring power to provide easier opening for handicapped or elderly.